

**This electronic collection of documents is provided
for the convenience of the user
and is Not a Certified Document –**

**The documents contained herein were originally issued
and sealed by the individuals whose names and license
numbers appear on each page, on the dates appearing
with their signature on that page.**

**This file or an individual page
shall not be considered a certified document.**

PROJECT REFERENCE NO.	SHEET NO.
SS-4914 CY	10
RW SHEET NO.	
ROADWAY DESIGN ENGINEER	HYDRAULICS ENGINEER
INCOMPLETE PLANS DO NOT USE FOR R/W ACQUISITION	
DOCUMENT NOT CONSIDERED FINAL UNLESS ALL SIGNATURES COMPLETED	



SS-4914 CY - MAP 4

REVISIONS

03-MAY-2017 16:49
 S:\1912\Design\Files\Lockson\SS-4914\CZ-SS-4914\CY\Plans\MicroStation\CY_Rdw_psh.lldgn
 8/17/99
 113

PROJECT REFERENCE NO.	SHEET NO.
SS-4914 CY	11
RW SHEET NO.	
ROADWAY DESIGN ENGINEER	HYDRAULICS ENGINEER
INCOMPLETE PLANS DO NOT USE FOR R/W ACQUISITION	
DOCUMENT NOT CONSIDERED FINAL UNLESS ALL SIGNATURES COMPLETED	



SS-4914 CY - MAP 5

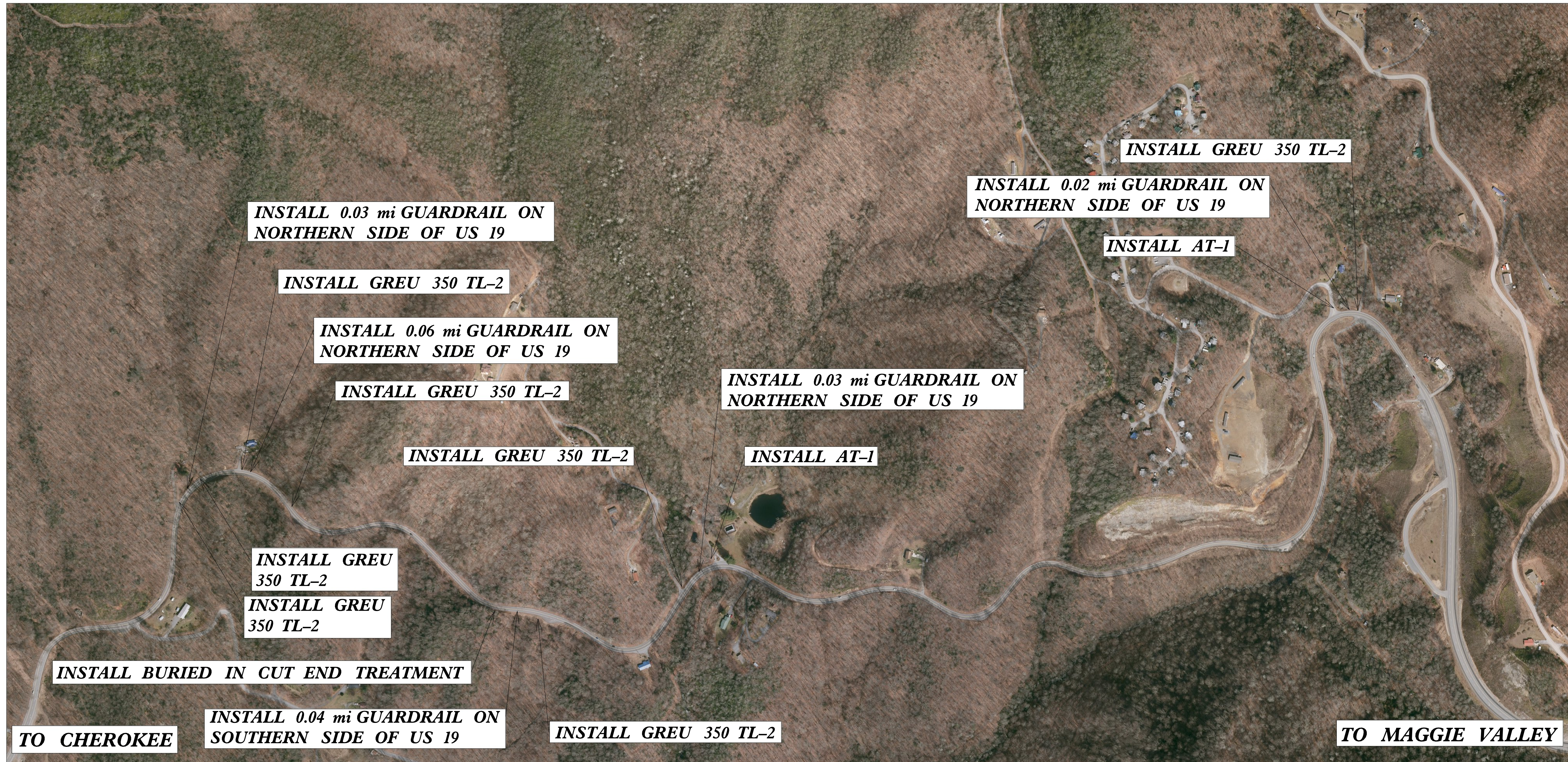
REVISIONS

04-MAY-2017 13:11 S:\12\Design\Files\Lockson\SS-4914CZ-SS-4914CY\Plans\MicroStation\CY_Rdy_psh_12.dgn
 8/17/99
 113

PROJECT REFERENCE NO. <i>SS-4914 CY</i>	SHEET NO. <i>12</i>
RW SHEET NO.	
ROADWAY DESIGN ENGINEER	HYDRAULICS ENGINEER
INCOMPLETE PLANS DO NOT USE FOR R/W ACQUISITION	
DOCUMENT NOT CONSIDERED FINAL UNLESS ALL SIGNATURES COMPLETED	

8/17/99

REVISIONS



SS-4914 CY - MAP 6

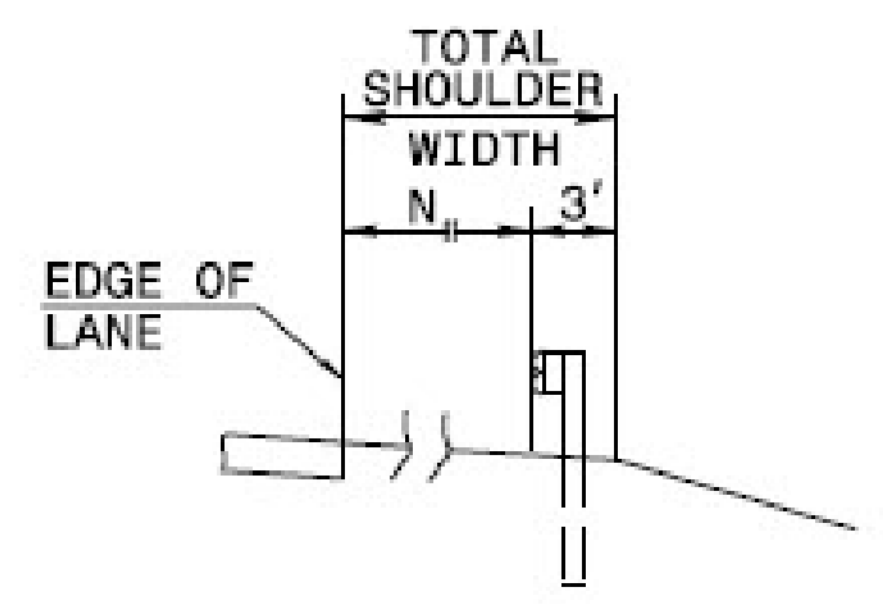
04-MAY-2017 13:27
 S:\1912\Design\Files\Lockson\SS-4914\CZ-SS-4914\CY\Plans\MicroStation\CY_Rdwy_psh_13.dgn
 mch113 Al DW14-226331

04-MAY-2017 14:46
 S:\1512\KDeaton\Files\Lockson\SS-4914CZ-SS-4914CY\Plans\MicroStation\CY_Rdwr.dtl.dgn
 8/17/99
 1-18
 REVISIONS
 SHEET 6 OF 12
 862.01

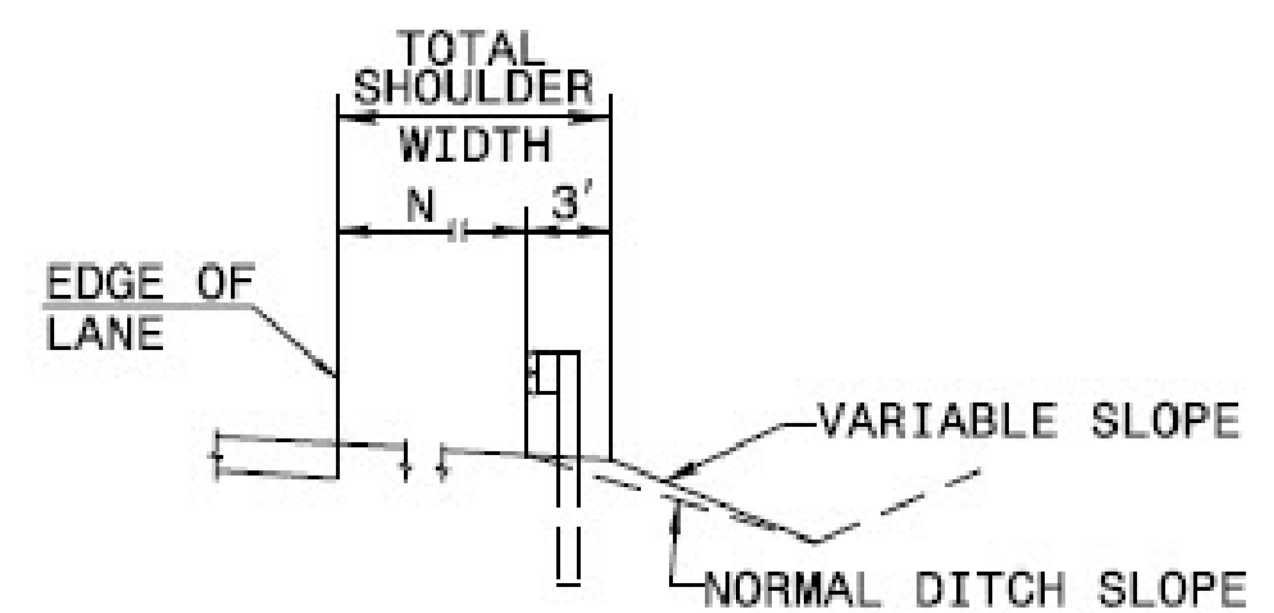
STATE OF NORTH CAROLINA
 DEPT. OF TRANSPORTATION
 DIVISION OF HIGHWAYS
 RALEIGH, N.C.

ROADWAY STANDARD DRAWING FOR
GUARDRAIL PLACEMENT

SHEET 6 OF 12
862.01

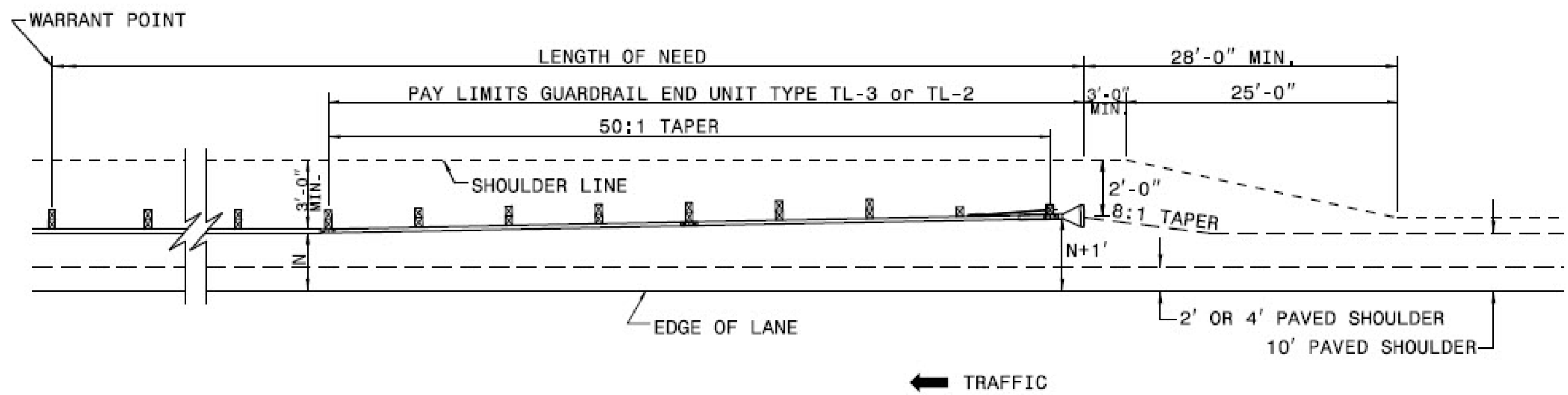


FILL SECTION



CUT SECTION

"N" = DISTANCE FROM EDGE OF LANE TO FACE OF GUARDRAIL WHERE GUARDRAIL IS PARALLEL TO LANE.



DETAIL OF BEGINNING OF GUARDRAIL IN CUT OR FILL SECTION

STATE OF NORTH CAROLINA
 DEPT. OF TRANSPORTATION
 DIVISION OF HIGHWAYS
 RALEIGH, N.C.

ROADWAY STANDARD DRAWING FOR
GUARDRAIL PLACEMENT

SHEET 6 OF 12
862.01

PROJECT REFERENCE NO. SS4914CY/CZ	SHEET NO. 15
ROADWAY DESIGN ENGINEER	HYDRAULICS ENGINEER
INCOMPLETE PLANS DO NOT USE FOR R/W ACQUISITION	
DOCUMENT NOT CONSIDERED FINAL UNLESS ALL SIGNATURES COMPLETED	

04-MAY-2017 14:42
 S:\1912\KDeaton\Files\Lockson\SS-4914CZ-SS-4914CZ\SS-4914CZ\Plans\MicroStation\CY_Rdwr.dtl.dgn
 8/17/99

REVISIONS

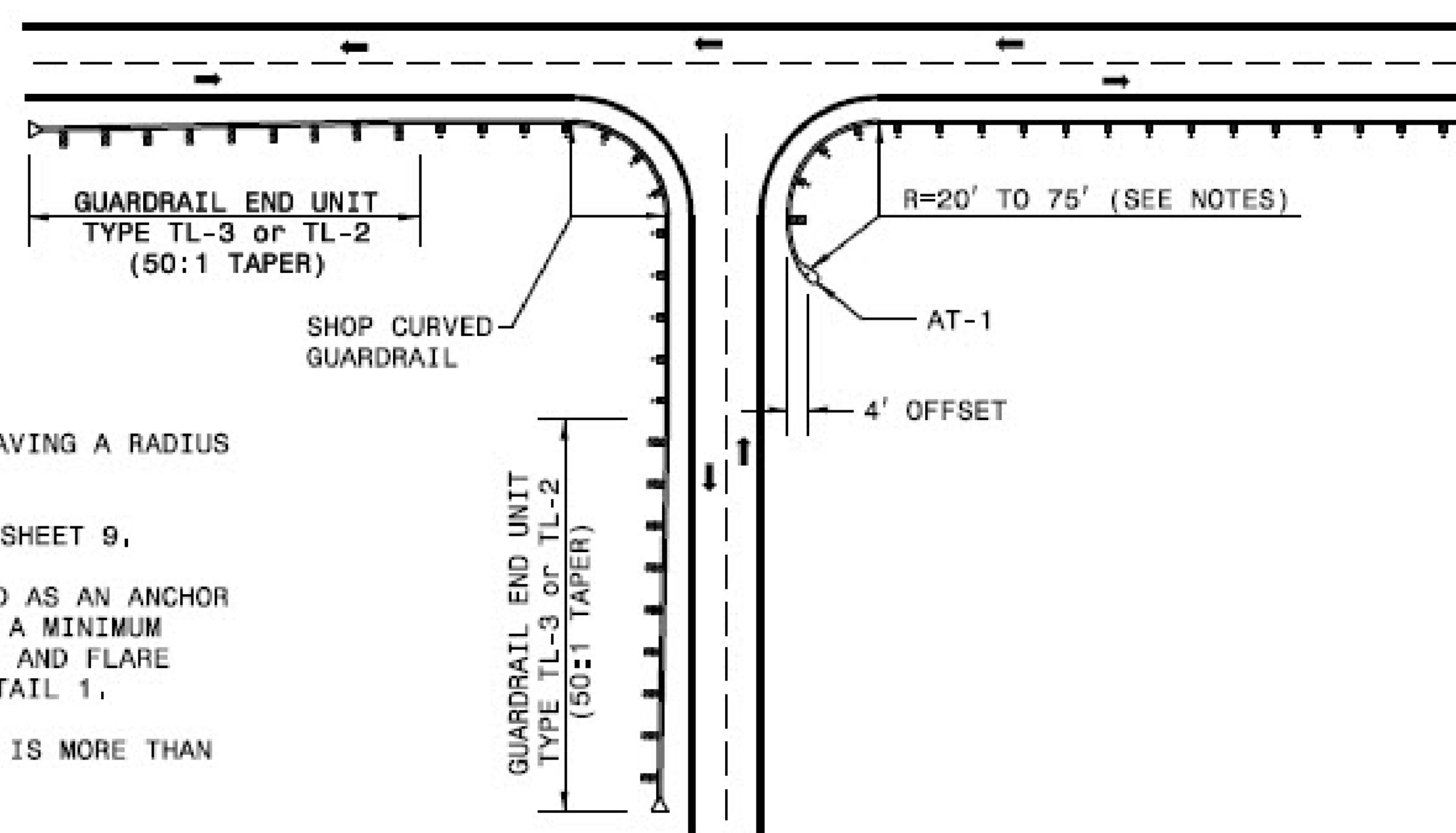
STATE OF NORTH CAROLINA
 DEPT. OF TRANSPORTATION
 DIVISION OF HIGHWAYS
 RALEIGH, N.C.

1-18

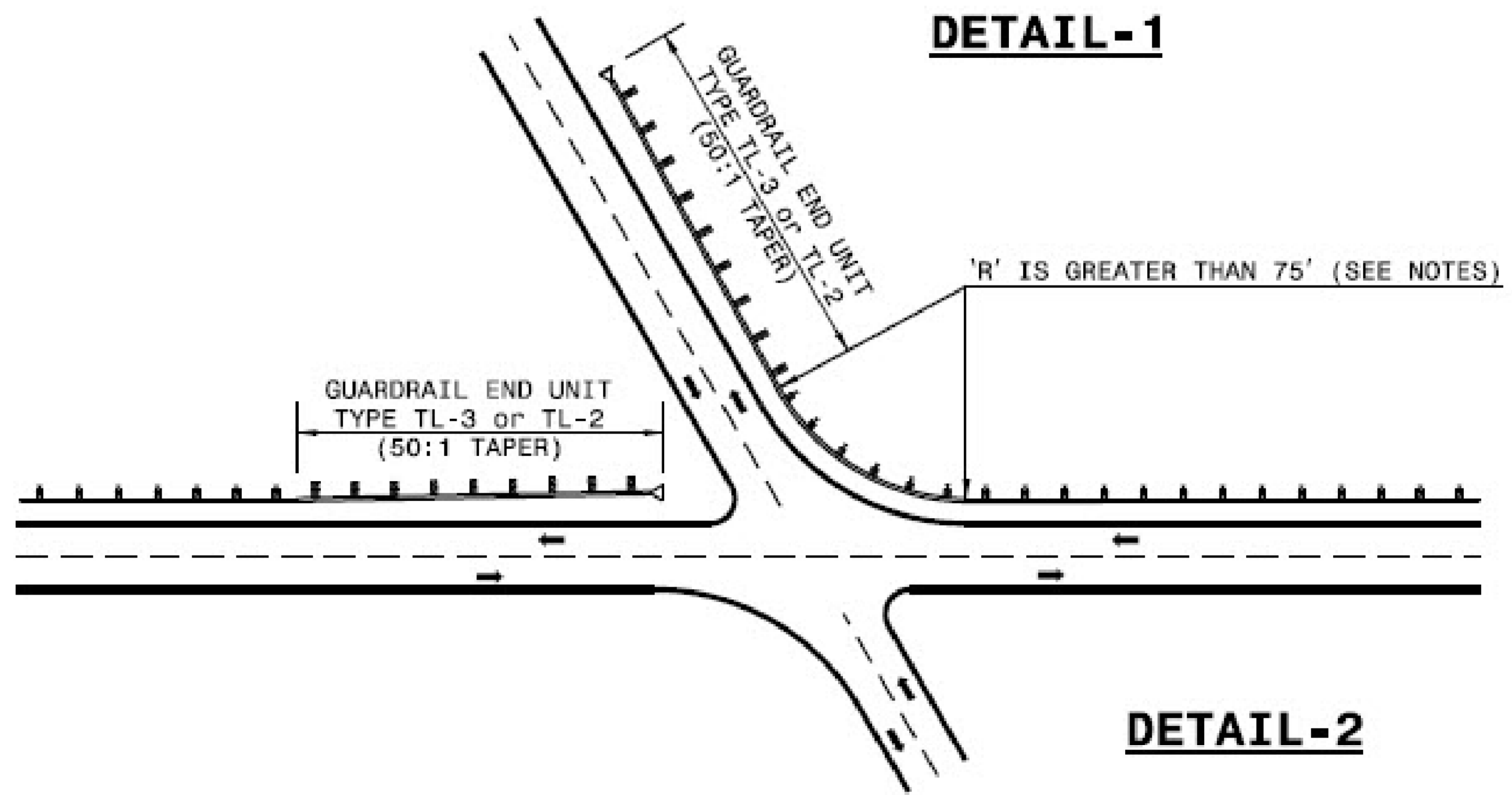
ROADWAY STANDARD DRAWING FOR
GUARDRAIL PLACEMENT

SHEET 8 OF 12
862.01

NOTES:
 SHOP CURVED GUARDRAIL IS DEFINED AS HAVING A RADIUS OF 150' OR LESS.
 WHEN RADIUS IS LESS THAN 20' REFER TO SHEET 9.
 WHENEVER SHOP CURVED GUARDRAIL IS USED AS AN ANCHOR AND THE RADIUS IS FROM 20' TO 75', USE A MINIMUM LENGTH OF 50' OF SHOP CURVED GUARDRAIL AND FLARE WITH AN AT-1 ANCHOR UNIT. REFER TO DETAIL 1.
 WHENEVER SHOP CURVED GUARDRAIL RADIUS IS MORE THAN 75', REFER TO DETAIL 2.
 MAINTAIN CLEAR SIGHT DISTANCE.



DETAIL-1



DETAIL-2

GUARDRAIL TREATMENT AT INTERSECTIONS

STATE OF NORTH CAROLINA
 DEPT. OF TRANSPORTATION
 DIVISION OF HIGHWAYS
 RALEIGH, N.C.

1-18

ROADWAY STANDARD DRAWING FOR
GUARDRAIL PLACEMENT

SHEET 8 OF 12
862.01

PROJECT REFERENCE NO. SS4914CY/CZ	SHEET NO. 16
ROADWAY DESIGN ENGINEER	HYDRAULICS ENGINEER
INCOMPLETE PLANS DO NOT USE FOR R/W ACQUISITION	
DOCUMENT NOT CONSIDERED FINAL UNLESS ALL SIGNATURES COMPLETED	

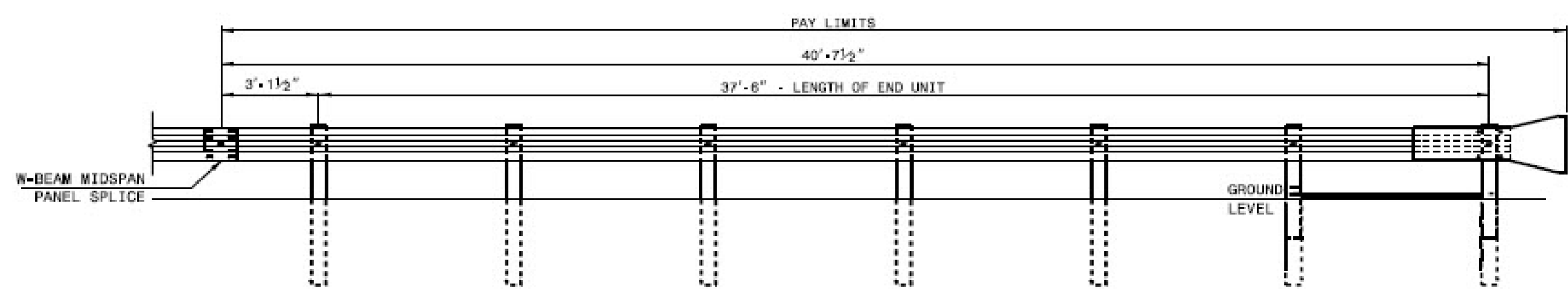
04-MAY-2017 14:43
S:\1912\KDeaton\Files\Lockson\SS-4914CZ-SS-4914CY\Plans\MicroStation\CY_Rdwr.dtl.dgn
8/17/99
REVISONS

STATE OF NORTH CAROLINA
DEPT. OF TRANSPORTATION
DIVISION OF HIGHWAYS
RALEIGH, N.C.

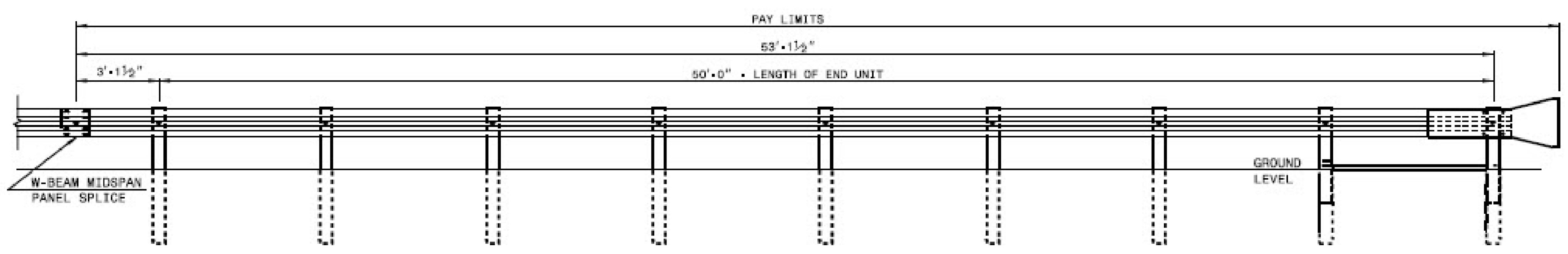
1-18

ROADWAY STANDARD DRAWING FOR
GUARDRAIL INSTALLATION

SHEET 2 OF 8
862.02



FLARED AND TANGENT
ELEVATION VIEW



FLARED AND TANGENT
ELEVATION VIEW

APPROACH END UNITS

1-18
STATE OF NORTH CAROLINA
DEPT. OF TRANSPORTATION
DIVISION OF HIGHWAYS
RALEIGH, N.C.

ROADWAY STANDARD DRAWING FOR
GUARDRAIL INSTALLATION

SHEET 2 OF 8
862.02

PROJECT REFERENCE NO. SS4914CY/CZ	SHEET NO. 17
RW SHEET NO.	
ROADWAY DESIGN ENGINEER	HYDRAULICS ENGINEER
INCOMPLETE PLANS DO NOT USE FOR R/W ACQUISITION	
DOCUMENT NOT CONSIDERED FINAL UNLESS ALL SIGNATURES COMPLETED	

04-MAY-2017 14:44
S:\1912\KDeaton\Files\Lockson\SS-4914CZ-SS-4914CY\Plans\MicroStation\CY_Rdwr.dtl.dgn
meb113
8/17/99

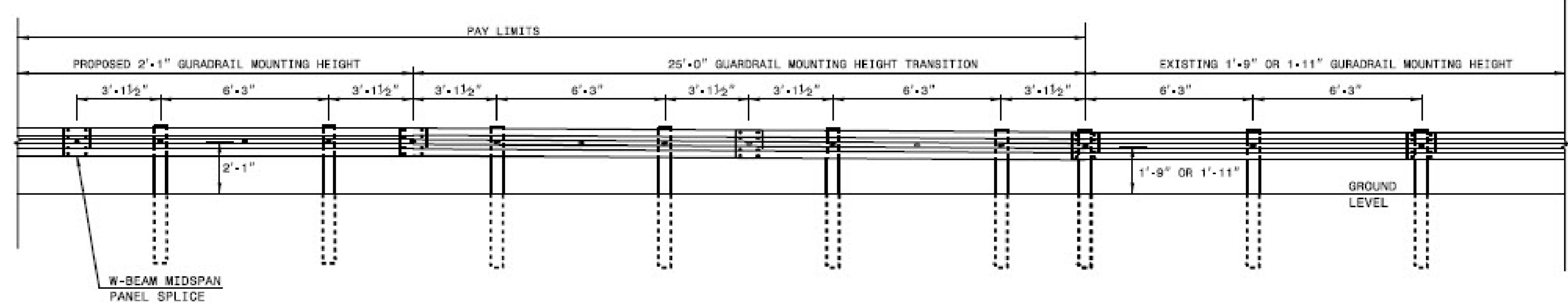
REVISIONS

STATE OF NORTH CAROLINA
DEPT. OF TRANSPORTATION
DIVISION OF HIGHWAYS
RALEIGH, N.C.

1-18

ROADWAY STANDARD DRAWING FOR
GUARDRAIL INSTALLATION

SHEET 4 OF 8
862.02



ELEVATION VIEW

TRANSITION FROM 1'-9" OR 1'-11" TO 2'-1" W-BEAM GUARDRAIL MOUNTING HEIGHT

STATE OF NORTH CAROLINA
DEPT. OF TRANSPORTATION
DIVISION OF HIGHWAYS
RALEIGH, N.C.

1-18

ROADWAY STANDARD DRAWING FOR
GUARDRAIL INSTALLATION

SHEET 4 OF 8
862.02

PROJECT REFERENCE NO. SS4914CY/CZ	SHEET NO. 19
RW SHEET NO.	
ROADWAY DESIGN ENGINEER	HYDRAULICS ENGINEER
INCOMPLETE PLANS DO NOT USE FOR R/W ACQUISITION	
DOCUMENT NOT CONSIDERED FINAL UNLESS ALL SIGNATURES COMPLETED	